

**Overhaul Report**

Mycom F2520LMC2-51  
Operating Hours: 50.000 hrs.



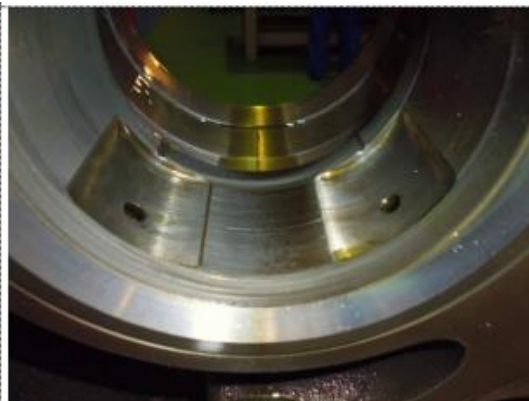
Balance piston cover disassembled.



High stage, rotor disassembled.



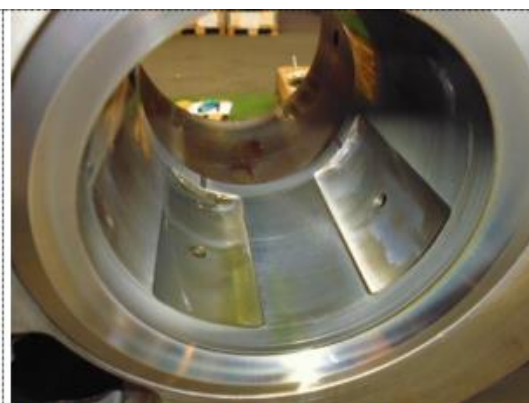
Inside rotor casing.



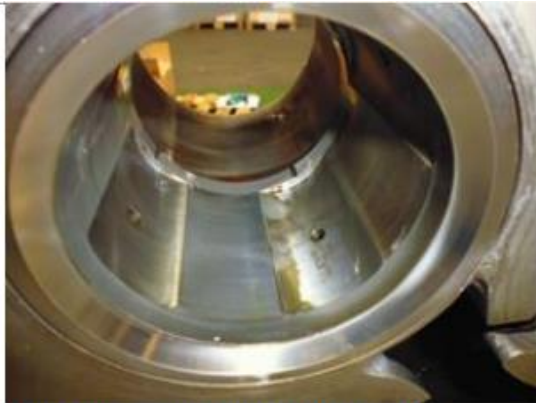
High stage, side bearing normal wear.  
Male side



High stage, side bearing normal wear.  
Female side



High stage, main bearing normal wear.  
Male side



High stage, main bearing normal wear.  
Female side



High stage, thrust bearing normal wear.



Low stage, rotor assemblies.



Low stage, end clearance adjustment.  
Male side 0,54mm  
Female side 0,54mm  
(Specified range 0.50~0.54)



High stage, rotor assemblies.  
End clearance adjustment.  
Male side 0,07mm  
Female side 0,07mm  
(Specified range 0.05~0.07)



Compressor leak check. 20BarG.